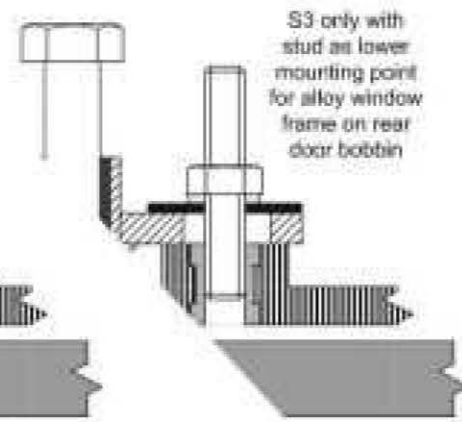
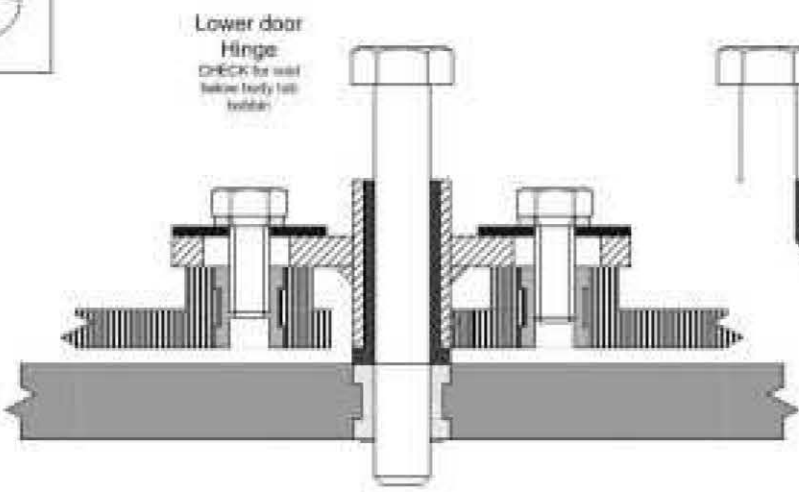
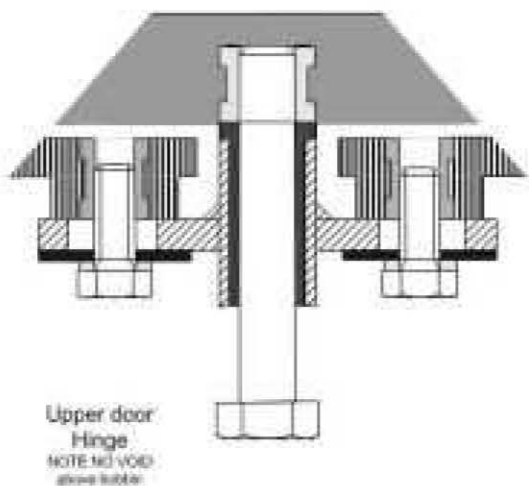
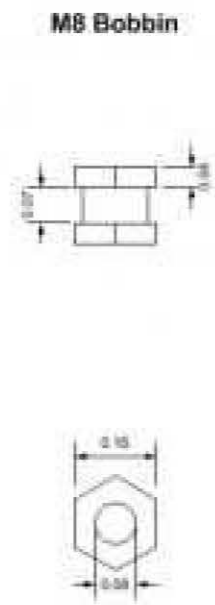
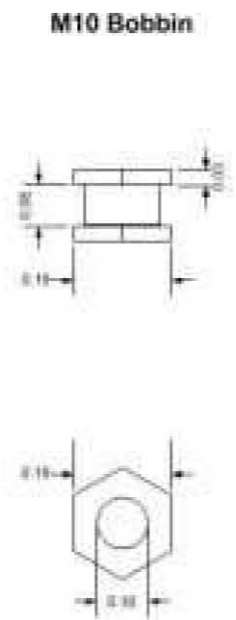
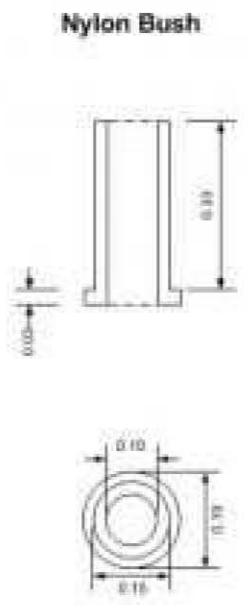
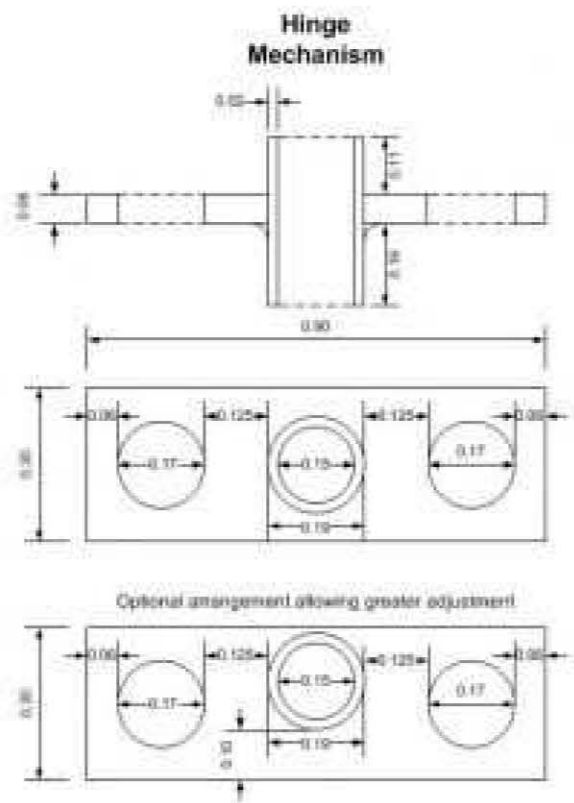




Parts List per Door

- 2 x Hinge Mechanism
- 2 x Nylon Bush
- 2 x M10 Bobbin (fitted to body tub, except early car had M8 Bobbins)
- 4 x M8 Bobbin (fitted to doors)
- 4 x M8 - 20 mm setscrew (S2) or
- 3 x M8 - 20 mm setscrew + 1 x M8 Nut + M8 - 46 mm stud (S3)
- 4 x M8 Penny Washer
- 4 x M8 Spring Washer
- 2 x M10 - 75 mm bolt (Shank needs to be about 50mm with thread shortened to 13 to 14mm for the top hinge)



- Brass Bobbin
- Hinge Plate
- Penny Washer
- Spring Washer
- Nylon Bush
- Door Frame
- Body Tub Bobbin
- Body Tub

S2/3 Door Hinge